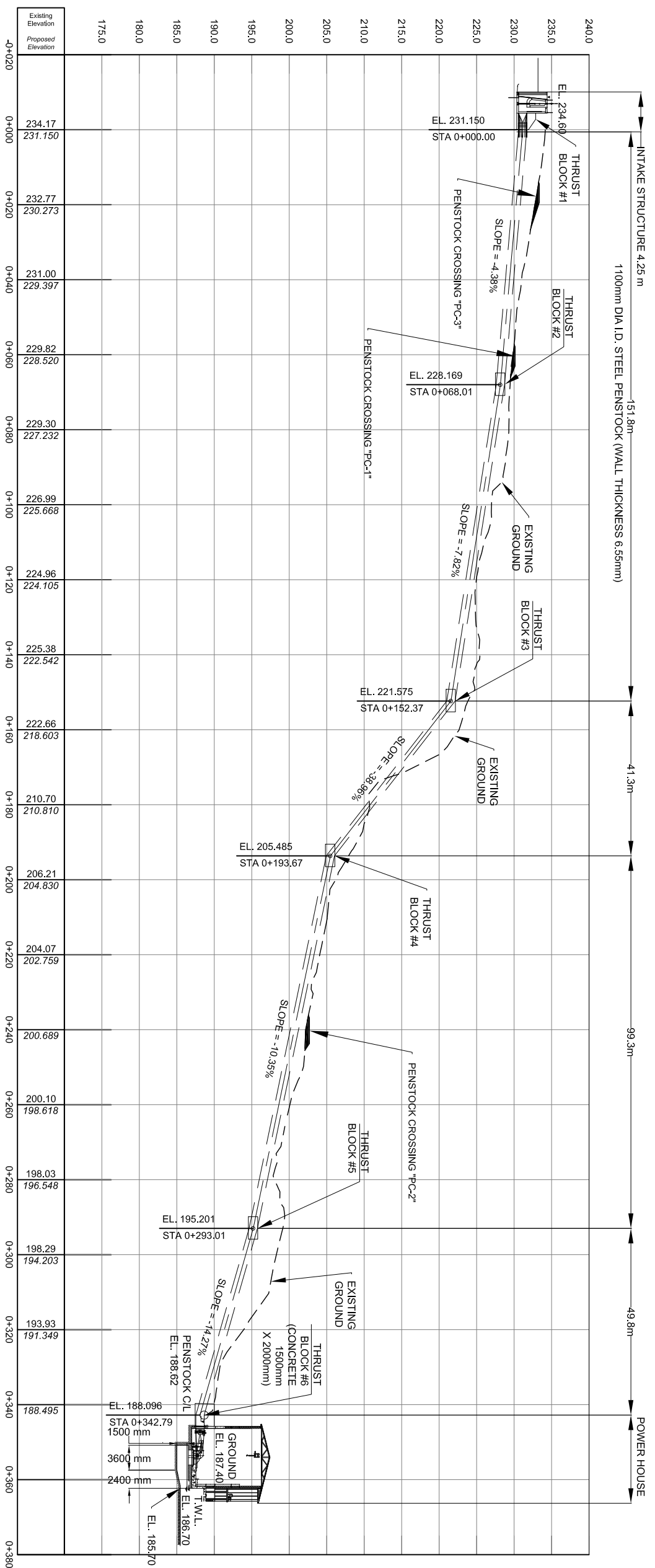


PENSTOCK PLAN



PENSTOCK PROFILE

FIGURE 1-6

- ABBREVIATIONS:**  
 T.W.L. TAIL WATER LEVEL  
 N.W.L. NORMAL WATER LEVEL  
 H.P.I. HORIZONTAL POINT OF INTERSECTION  
 V.P.I. VERTICAL POINT OF INTERSECTION
- NOTES:**  
 1. GRADES AND ELEVATIONS SUBJECT TO REVISION BY FIELD ENGINEER.  
 2. MAXIMUM CLEAR SPAN OF PENSTOCK BETWEEN SUPPORTS TO BE 16m.  
 3. ALL DIMENSIONS ARE IN METERS, UNLESS NOTED OTHERWISE.

**DRAFT  
 NOT FOR CONSTRUCTION**

REV.	DATE	DESCRIPTION	BY	CHK.	APPR.
3	26/03/12	REVISION 2	MP	IA	
2	01/03/12	REVISION 1	MP	IA	
1	01/08/11	DRAFT FOR COMMENT	AW	IA	

**IBI GROUP**

9133 Leslie Street  
 Suite 200  
 Richmond Hill, Ontario  
 Canada L4B 4N1  
 Tel (905)763-2322  
 Fax(905)763-9833

**LIZARD CREEK  
 GENERATING STATION**

**PENSTOCK "S-4"  
 PLAN AND PROFILE  
 ACCESS ROAD "A-2"**

DESIGN BY: LA. CHECKED BY:  
 DRAWN BY: A.W. CHECKED BY:  
 DATE: AUGUST, 2011 JOB NO.: 11995

SCALE: AS SHOWN DRAWING NO. DD-5